

MATHIOSstone®

only nature can copy us

mathios.com



RUSTIC DESIGN

RUSTIC DESIGN

Stone

**TUSCANY
BROCHURE**

2023

by mathios stone

Stones have always fascinated and inspired people

Mathios Stone Tuscany is the quintessential of rustic design. Inspired by the unique landscape of the beloved Italian region, this cultured stone collection combines chic design with timeless majesty.



Weather Conditions

Applicable on Internal & External spaces
Resistant to: Extreme temperatures from -30 to +50 degrees Celsius, Frost, UV, Different humidity levels, Water.

Flat

Corner



65-195 mm

160-310 mm



85-485 mm

L.a 70-80 mm
L.b 110-180 mm



20-42 mm

35-40 mm



24 kg*

22 kg*



0,55 m²*

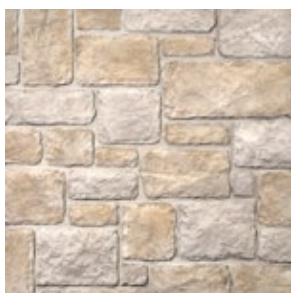
1,55 m²*

*pro Carton

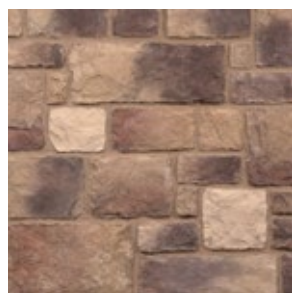
Mild Texture



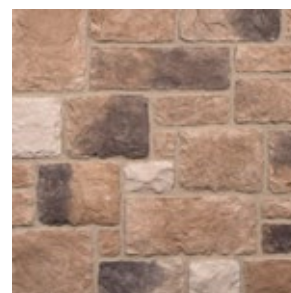
Tuscany White



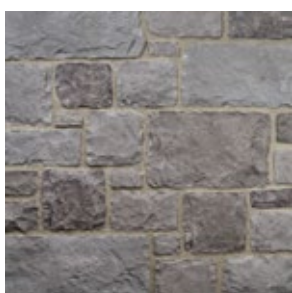
Tuscany Champagne



Tuscany Earth



Tuscany Brown



Tuscany Gray



Tuscany Corners

“Rustic Style,”



Tuscany Custom Color



Tuscany Champagne

Rustic style attracts people who appreciate traditional values...



Tuscany Four Custom Color



Tuscany Gray

Mathios Grout

Easy To Choose A Colour



Mathios Grout Collection



Volcanic Gray



Terracotta



Olive Green



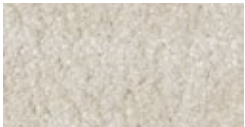
Off White



Mocca Brown



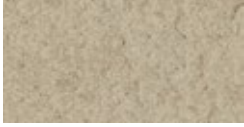
Dramatic Black



Coral Sand



Colonial Ivory



Cameo Beige



Brown Sugar



Ash Gray



Antique Beige





Tuscany

STRONG POINTS

Eco-responsibility

- Ingredients of natural origin
- Class A+ certification for the emission of Volatile Organic Compounds (VOCs)
- 100% recyclable products
- Packaging in boxes made from recycled paper

Installation flexibility

- Intended for interior as well as exterior architectural applications
- Can be placed on any type of surface: insulating facades, walls, plasterboard, concrete, wood, glass, tiles, prefabricated walls
- Ready to use

An essential choice

- Certification EN ISO 9001 : 2015
- Profitable investment
- 30 year color guarantee
- Simplified installation procedure and easy fixing
- Repair and extension of the construction possible: identical parts available in the long term





Stone
TUSCANY

